



BTS Tracker

Installation Guide

Copyright © 2020 SecurCube

Table of Contents

Machine installation prerequisites	3
The prerequisites	4
1. Download and install Microsoft .NET Framework v.4.6.2	4
2. Download and install Microsoft SQL Server Express	4
3. Download and install Wibu system (for USB Dongle users)	9
4. Download BTS Tracker Hardware mobile APP	11
SecurCube BTS Tracker Desktop Software	12
Machine license activation	13
USB Dongle activation	14
Start the analysis	17

Machine installation prerequisites

1. Operating System

- Windows 10 (32 or 64-bit suggested)
- Windows 8.1 32 or 64-bit
- Windows 8 32 or 64-bit

2. Hardware (average range of 500.000 data per case)

- Monitor: 1280x800 or higher - suggested 1920x1800
- Ram: suggested 16GB - min 8GB
- SSD highly recommended
- Processor: 2.0 GHz or higher

3. Software

- NET Framework 4.6.2
- Microsoft SQL Server Express 2017 or 2014 (please note, consider your machine operating system; if lower than Windows 10 it is suggested 2014)
- Microsoft Office 2010 or higher (not mandatory but highly recommended to properly import excel files)
- Wibu systems (only for USB Dongle users)

Please note, if one of the aforementioned prerequisites is missing or needed, continue on the following section or email us at support@securcube.net

The prerequisites

1. Download and install Microsoft .NET Framework v.4.6.2

[<https://www.microsoft.com/en-us/download/details.aspx?id=53344>]

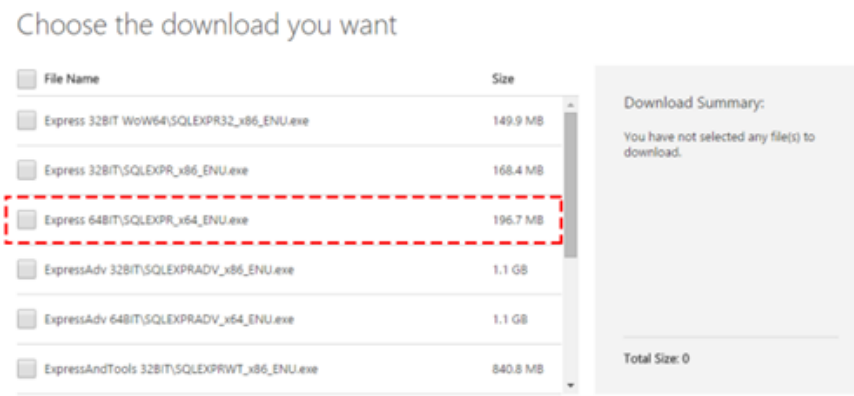
2. Download and install Microsoft SQL Server Express

- For users with Windows 10 install Microsoft® SQL Server® 2017 Express
[<https://www.microsoft.com/en-us/download/details.aspx?id=55994>]
- For users with Windows 8.1 or 8 install Microsoft® SQL Server® 2014 Express
[<https://www.microsoft.com/en-US/download/details.aspx?id=42299>]

Follow the steps below in order to correctly download the SQL Server.

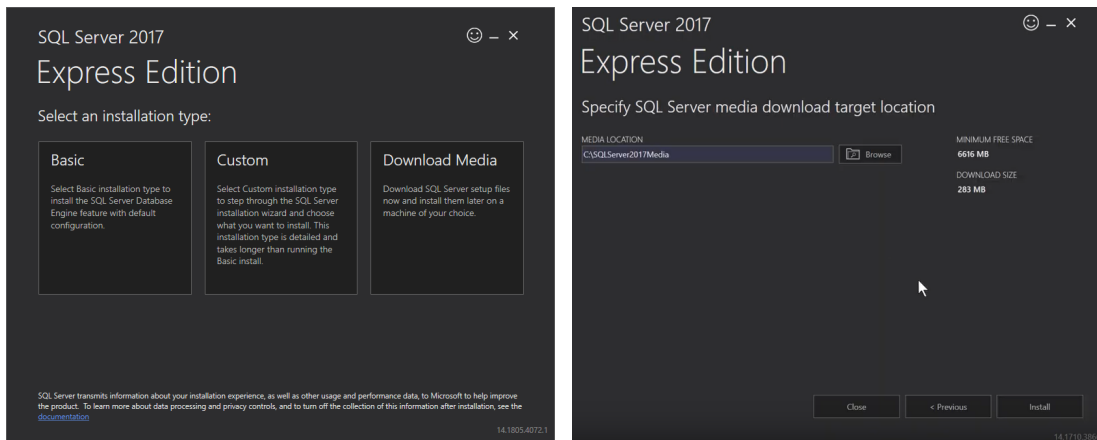
Please note, the only difference in the installation of SQL Server 2017 and SQL Server 2014 is at the time of the selection of the appropriate version according to your machine system type (it is possible to check it from: Start → Control Panel → System and Security → System type).

The steps are the same as follow from STEP 2.



STEP 1

Start the installation and select the '**Custom**' installation type, select the folder to save the program and start the installation.



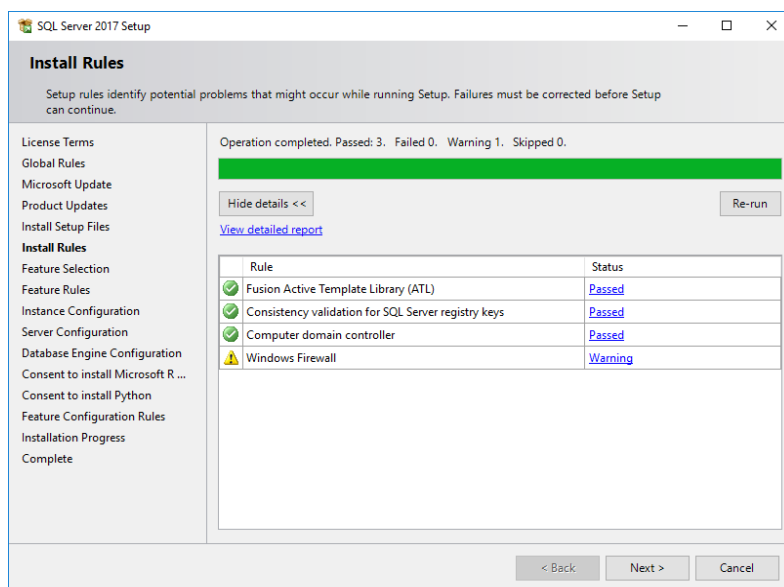
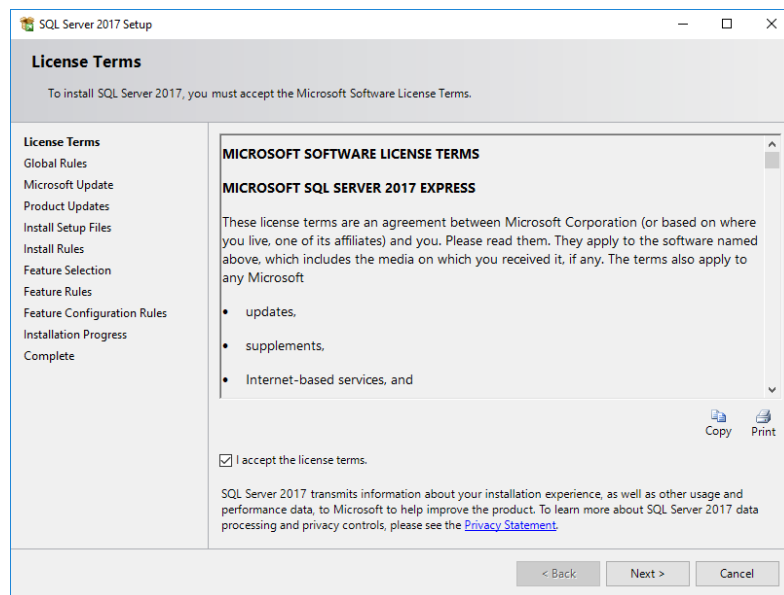
STEP 2

It will appear a new interface where it is required to select 'New SQL Server stand-alone installation or add features to an existing installation'. The installation will start in few seconds.



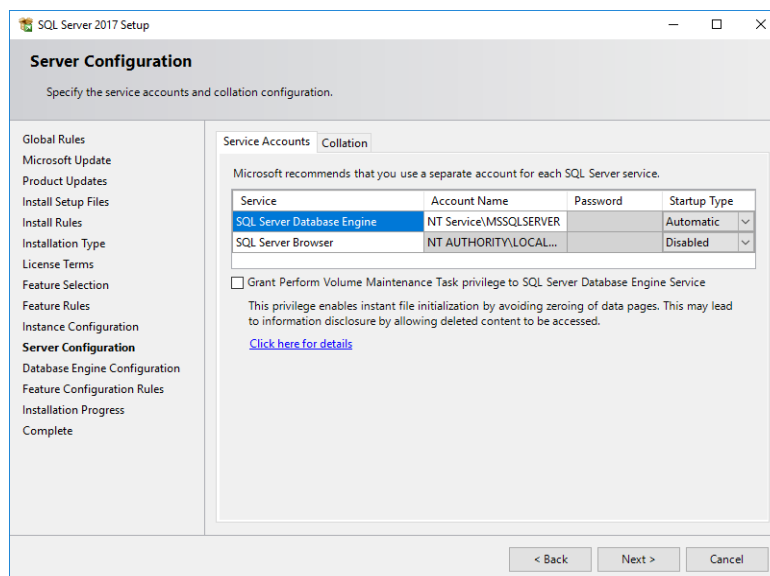
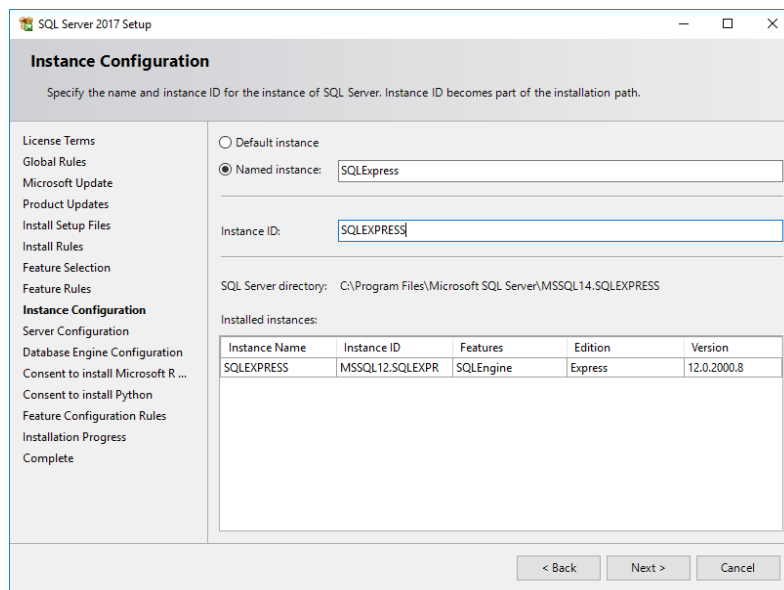
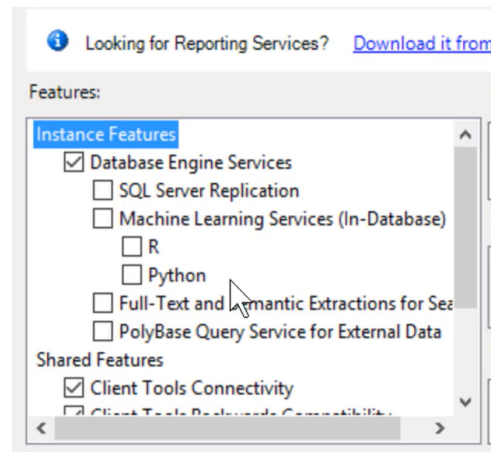
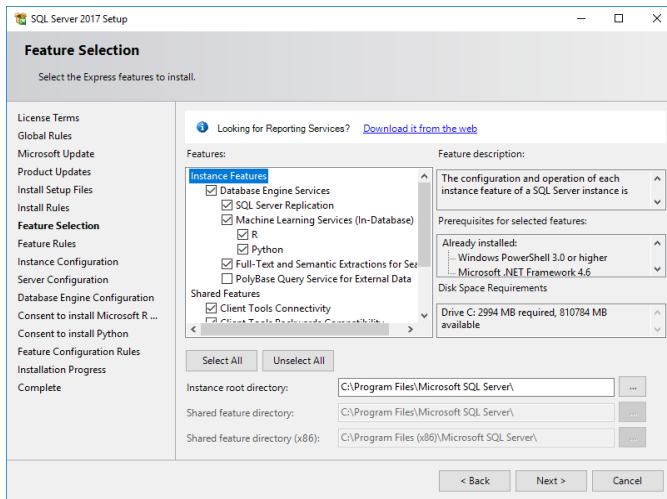
STEP 3

Accept the licence terms and proceed with the installation.



STEP 4

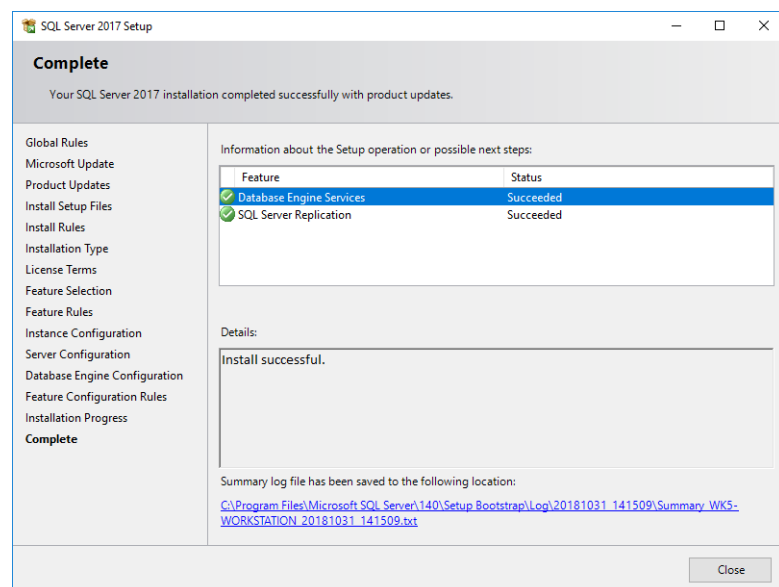
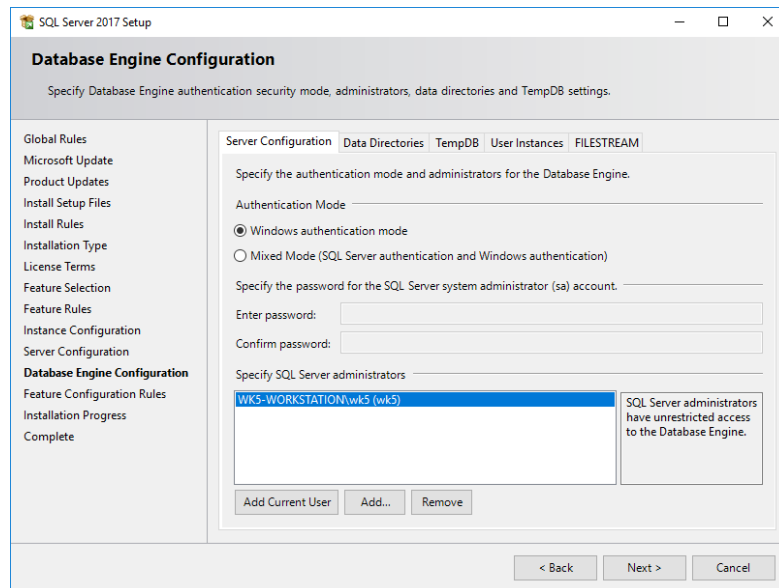
Please, be aware: by default Microsoft consents the installation of additional tools not necessary for PhoneLog use. Remove the tick on the Microsoft suggested programs: SQL Server Replication; Machine Learning Services (In-Database); R; Python; Full.Text Semantic Extractions.



STEP 5

If not automatically inserted, click on 'Add current User' to give user permission on database SQL Server Express.

PLEASE NOTE, if you want to enable also other users, enter them manually by clicking the button 'Add'.



3. Download and install Wibu system (for USB Dongle users)

[<https://www.wibu.com/it/support/user/downloads-user-software.html>]

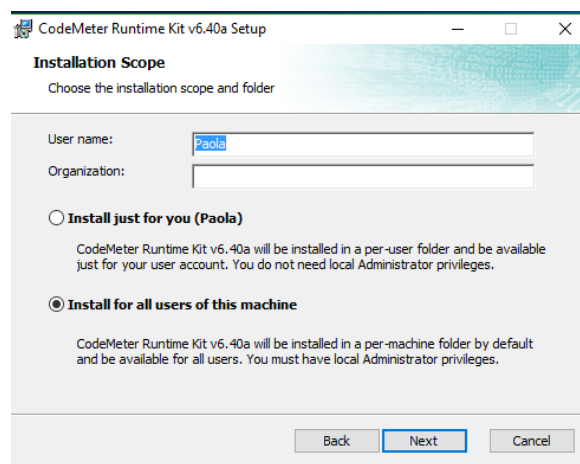
STEP 1

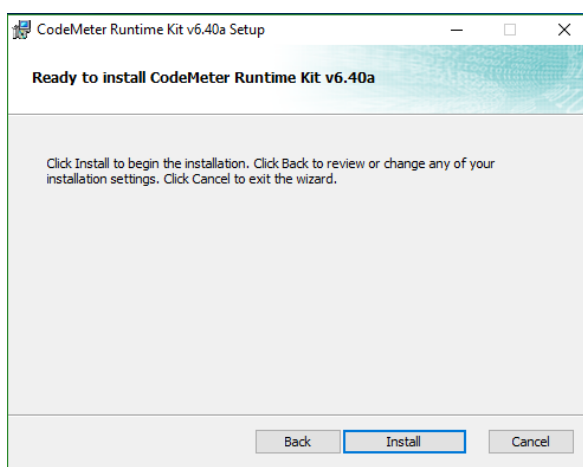
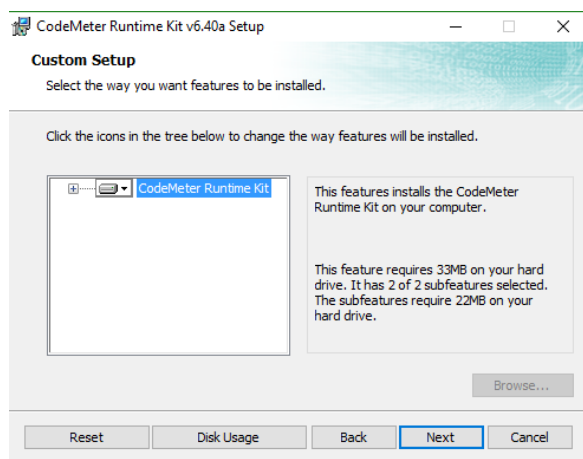
Download CodeMeter for Windows and follow the instruction to start the installation.

CodeMeter User Download

CodeMeter User Runtime for Windows

Version 6.40a | 23.12.2016 | multilanguage [download](#) (36.81 MB)
Current selection: Windows 32/64-Bit



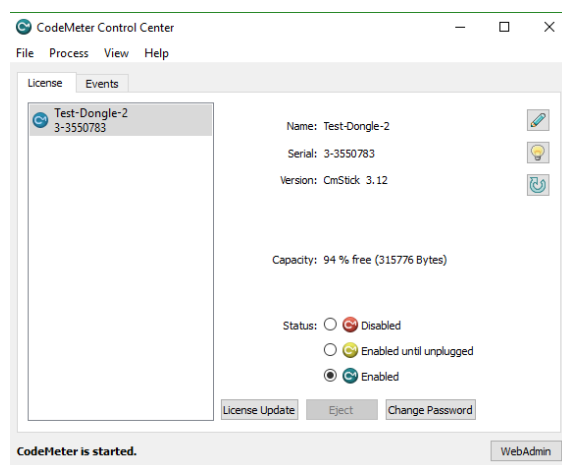


STEP 2



Open the software from your Desktop

Once the USB dongle is plugged in, the system will display the interface with the dongle main information.



4. Download BTS Tracker Hardware mobile APP

Please note, this application is available just for Android

[<https://play.google.com/store/apps/details?id=net.securcube.btshardwareappv2>]

Try also our free version for measurements without SecurCube BTS Tracker hardware module

[<https://play.google.com/store/apps/details?id=net.securcube.btstracker>]

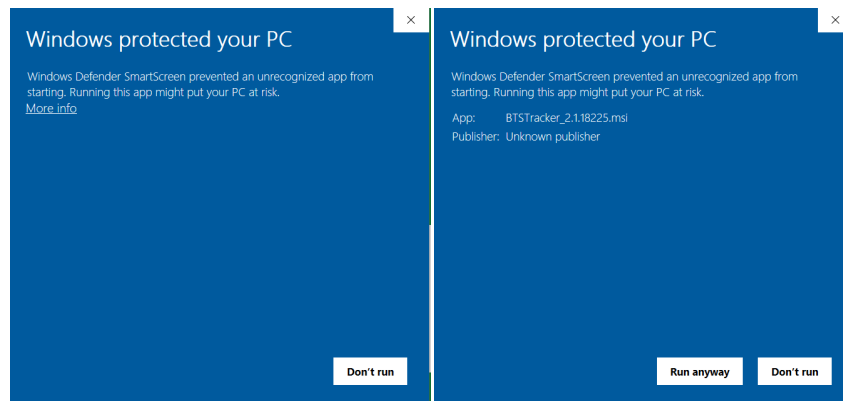
SecurCube BTS Tracker Desktop Software

Download and install the program

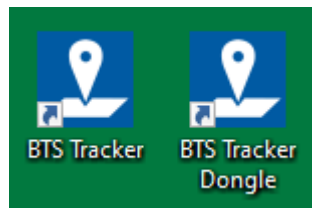
[<http://www.phonelog.it/x/Release/btstracker>]

Follow the procedure to start the installation.

Windows can ask the pre authorization before installing the software, click on 'More info' and then on 'Run anyway'.



Once the installation is completed you may see two icons on the Desktop:

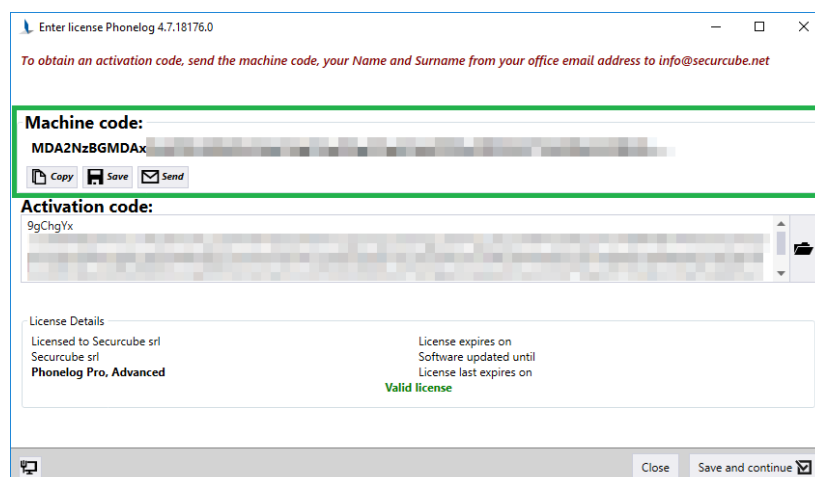


If you are installing the software license directly in your machine, use the program icon called BTS Tracker. Follow the section '[Machine license activation](#)' to proceed with the activation of the license.

If you have the USB dongle, use the program icon called BTS Tracker Dongle. Follow the section '[USB Dongle activation](#)' to proceed with the activation of the license.

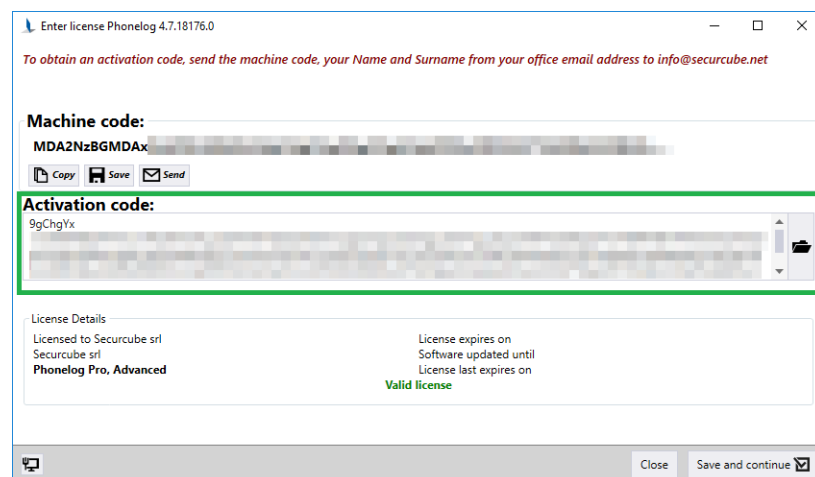
Machine license activation

To activate the software license it is required the activation code; please send the machine code (the alphanumeric string). Use the button (Copy; Save; Send) to send it to info@securcube.net.




SecurCube team will send the activation code tied to the machine code sent. Copy and paste the license code into the dedicated area.


On the lower side you will see the message 'Valid license' with the license and update expiration date. Click on 'Save and continue' to proceed with the installation.



USB Dongle activation

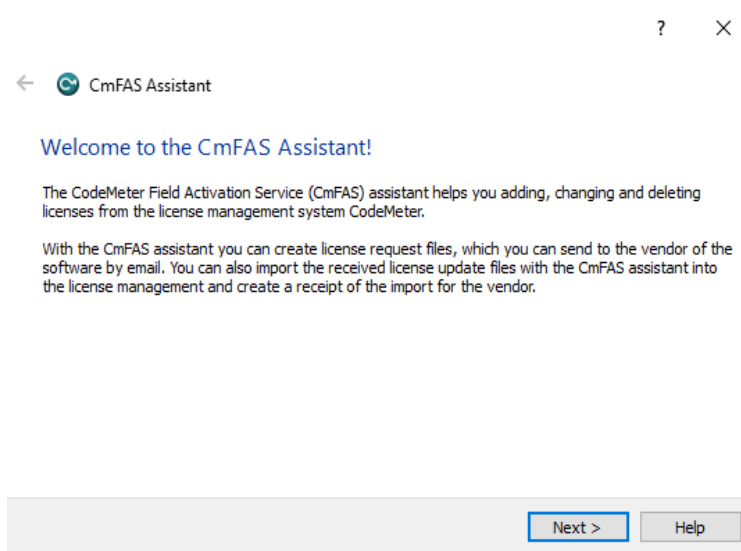
STEP 1

Open CodeMeter software from your Desktop  , from the main interface, make sure to update the Dongle program (if not the licence will not work properly) by clicking

the dedicated icon  , then click on “Licence Update” to generate a **WibuCmRaC** file for the dongle license activation.

Please note, this procedure is valid also to request the **licence renewal** as well.

A procedure will guide you automatically in the file creation.



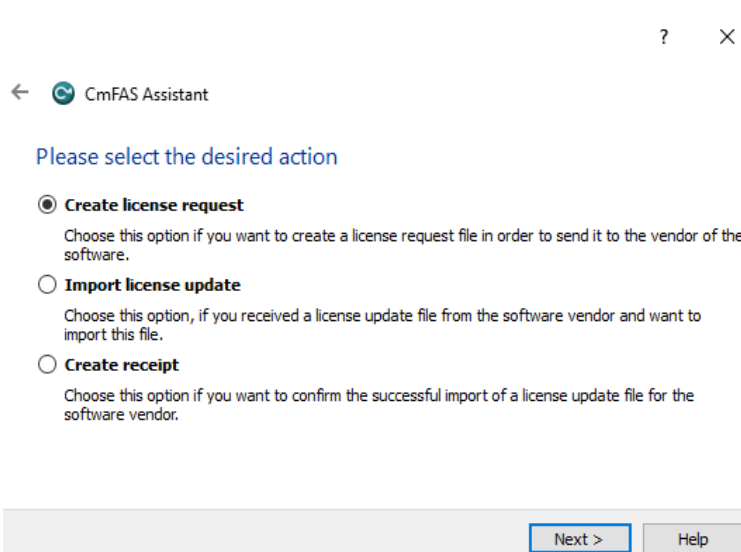
← CmFAS Assistant

Welcome to the CmFAS Assistant!

The CodeMeter Field Activation Service (CmFAS) assistant helps you adding, changing and deleting licenses from the license management system CodeMeter.

With the CmFAS assistant you can create license request files, which you can send to the vendor of the software by email. You can also import the received license update files with the CmFAS assistant into the license management and create a receipt of the import for the vendor.

Next > Help



← CmFAS Assistant

Please select the desired action

☒ **Create license request**
Choose this option if you want to create a license request file in order to send it to the vendor of the software.

☐ **Import license update**
Choose this option, if you received a license update file from the software vendor and want to import this file.

☐ **Create receipt**
Choose this option if you want to confirm the successful import of a license update file for the software vendor.

Next > Help

← CmFAS Assistant

?

×

Please choose an option for the license request

☒ **Extend existing license**
Choose this option if you want to change an existing license or to add new licenses to an existing license of the same vendor.

☐ **Add license of a new vendor**
Choose this option if you want to add a new license and there are no licenses from this vendor in the selected license container.

Next > Help

← CmFAS Assistant

?

×

Please choose the vendor

☒ Securcube srl (103009)

Select the software vendor to which you want to send the license request file. The vendor will only see the data which you select here. So you can ensure that the vendor doesn't see which other licenses from other vendors you have.

Next > Help

← CmFAS Assistant

?

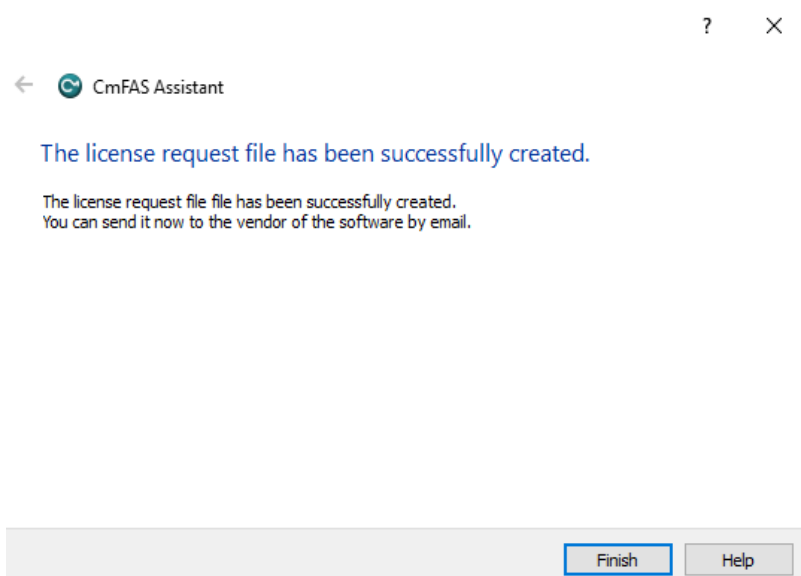
×

Please select the file name

C:\Users\Paola\3-3550783.WibuCmRaC ...

Select a file name for storing the license request file. Then click on 'commit' to create the file. You can then send this file to the vendor by email.

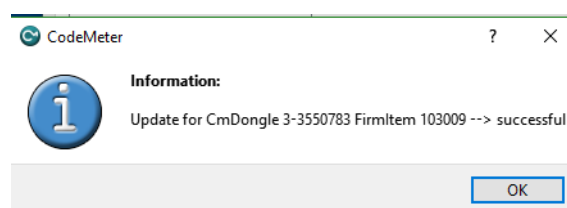
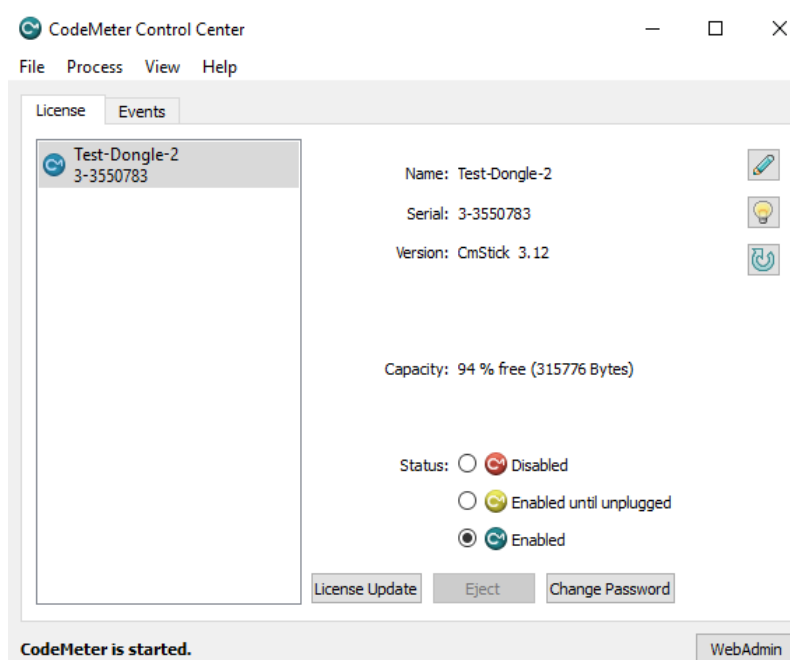
Commit Help



STEP 2

Please, send by email the generated file in order to receive the activation license, file extension **.WibuCmRaU**.

Drag and drop the file into the interface and a message will inform you about the result of the import.

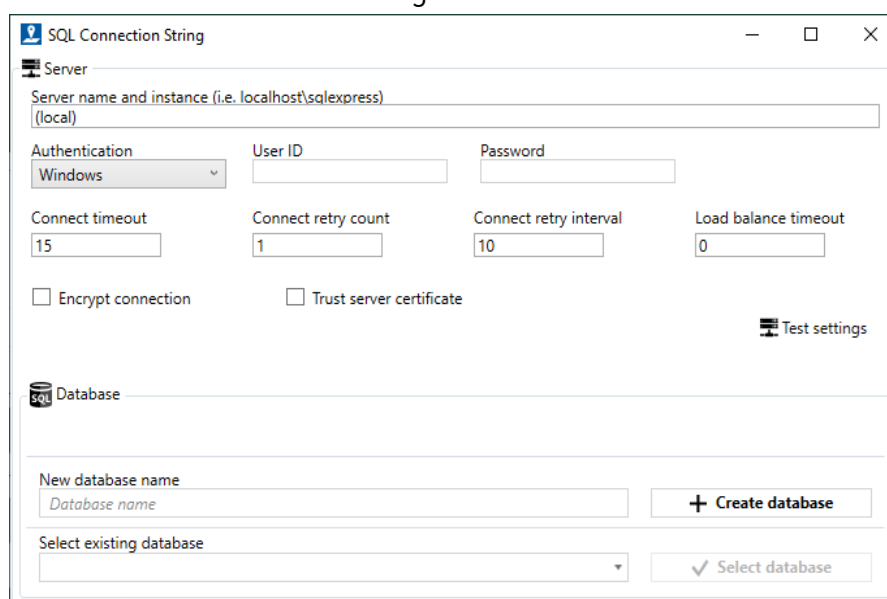


Start the analysis

Once the software is activated, it is necessary to create the database.

Make sure the server name and the instance have the same name as the one previously set during SQL installation. It is possible to click on 'Test settings' to receive a feedback from the program if everything is ok or there are some issues.

Create a new database or select an existing one.



The screenshot shows the 'SQL Connection String' dialog box. It is divided into two main sections: 'Server' and 'Database'.
In the 'Server' section, there is a text field for 'Server name and instance (i.e. localhost\sqlexpress)' with '(local)' entered below it. Below this are fields for 'Authentication' (set to 'Windows'), 'User ID', and 'Password'. There are also four numeric input fields: 'Connect timeout' (15), 'Connect retry count' (1), 'Connect retry interval' (10), and 'Load balance timeout' (0). At the bottom of this section are two checkboxes: 'Encrypt connection' and 'Trust server certificate', both of which are unchecked. A 'Test settings' button is located to the right of these checkboxes.
In the 'Database' section, there is a 'New database name' text field with 'Database name' as a placeholder, followed by a '+ Create database' button. Below this is a 'Select existing database' dropdown menu and a 'Select database' button with a checkmark icon.

If SecurCube BTS Tracker Desktop Software can't connect to the server or can't find the database, something went wrong with the installation. Please repeat the Installation of Microsoft SQL Server and try again.

Feel free to contact us through email at support@securcube.net, please send us a screenshot of the interface.

If the installation succeeded, you will be redirected to BTS Tracker main interface. Create a new case or retrieve an old one if you are using an existing database.

For further information we warmly suggest to consult the User manual available within the software by clicking F1 or from the top menu → Help → User Manual.

Now you're ready to start your BTS logs analysis!