



## **Installation Guide**

Copyright © 2020 SecurCube

## Table of Contents

<b>Machine installation prerequisites .....</b>	<b>3</b>
<b>The prerequisites .....</b>	<b>4</b>
1. Download and install Microsoft .NET Framework v.4.6.2 .....	4
2. Download and install Microsoft SQL Server .....	4
3. Download and install Wibu system (for USB Dongle users) .....	10
<b>SecurCube PhoneLog .....</b>	<b>12</b>
<b>Machine license activation .....</b>	<b>13</b>
<b>USB Dongle activation .....</b>	<b>14</b>
<b>Start the analysis .....</b>	<b>17</b>

## Machine installation prerequisites

### 1. Operating System

- Windows 10 (32 or 64-bit suggested)
- Windows 8.1 32 or 64-bit
- Windows 8 32 or 64-bit

### 2. Hardware (500A.000 average range of data per case)

- Monitor: 1280x800 or higher - we suggest 1920x1800
- Ram: we suggest 16GB - minimum is 8GB
- SSD is highly recommended
- Processor: 2.0 GHz or higher

### 3. Software

- NET Framework 4.6.2
- Microsoft SQL Server Express 2017 or 2014 (please note, consider your machine operating system; if it is lower than Windows 10, we suggest using the 2014 version)
- Microsoft Office 2010 or higher (not mandatory but highly recommended in order to import excel files properly)
- Wibu systems (only for USB Dongle users)

Please note, if one of the aforementioned prerequisites is missing or needed, please send an email to [support@securcube.net](mailto:support@securcube.net)

## The prerequisites

### 1. Download and install Microsoft .NET Framework v.4.6.2

[<https://www.microsoft.com/en-us/download/details.aspx?id=53344>]

### 2. Download and install Microsoft SQL Server

- For users with Windows 10 install Microsoft SQL Server 2017 Express

[<https://www.microsoft.com/en-us/download/details.aspx?id=55994>]

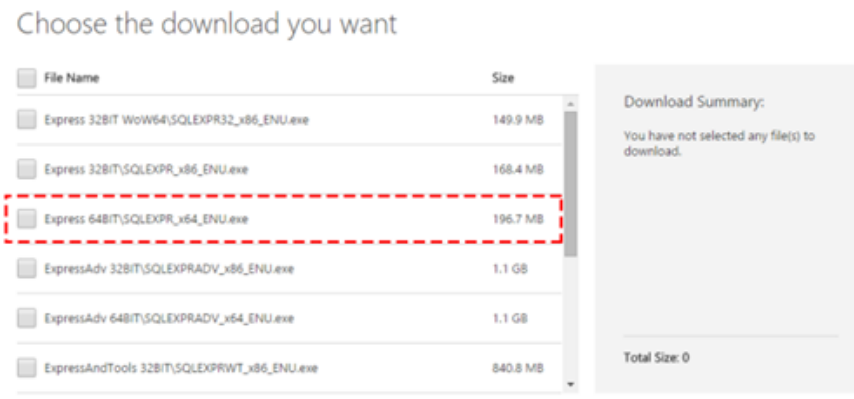
- For users with Windows 8.1 or 8 Microsoft SQL Server 2014 Express

[<https://www.microsoft.com/en-US/download/details.aspx?id=42299>]

Follow the steps shown below in order to download the SQL Server correctly.

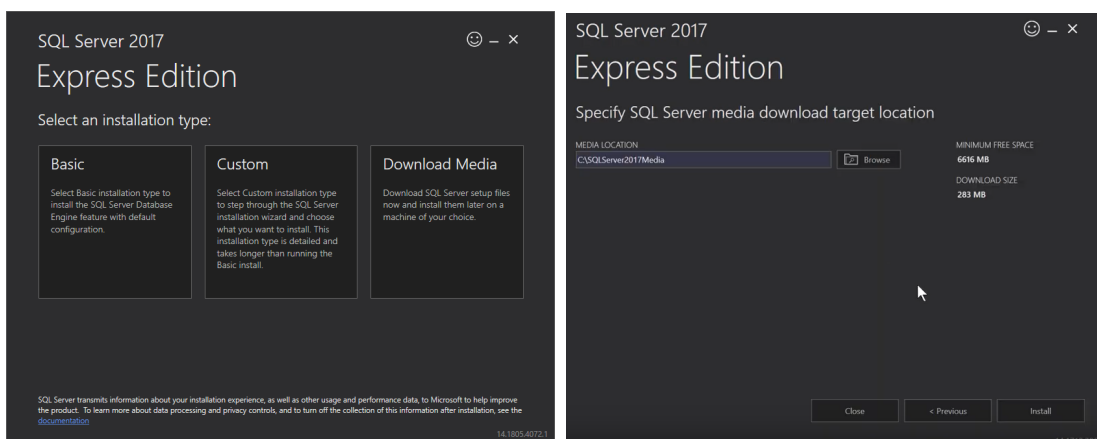
**Please note**, the only difference in the installation of SQL Server 2017 and SQL Server 2014 is at the time of the selection of the appropriate version according to your machine system type (you can check this by following this path: Start → Control Panel → System and Security → System type).

The steps are the same for both options starting from STEP 2.



## STEP 1

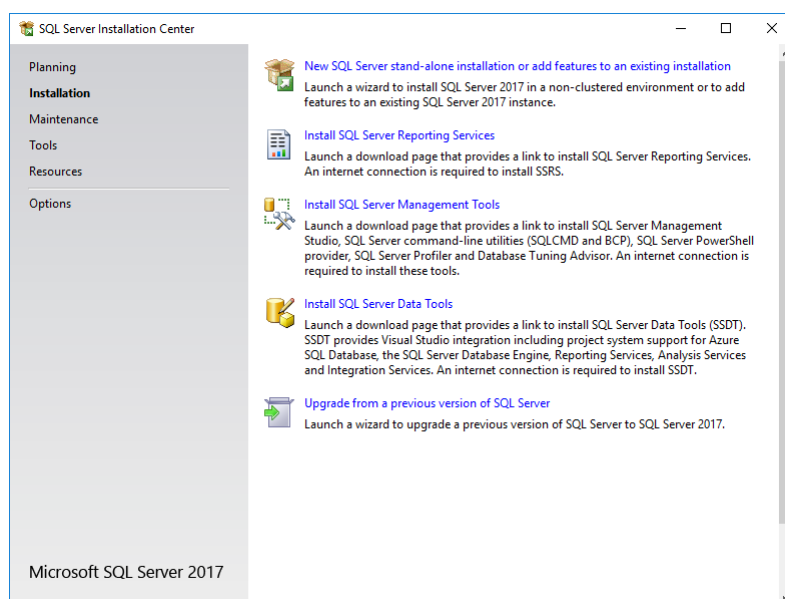
Start the installation and select the **‘Custom’** installation type, select the folder to save the program and start the installation.



## STEP 2

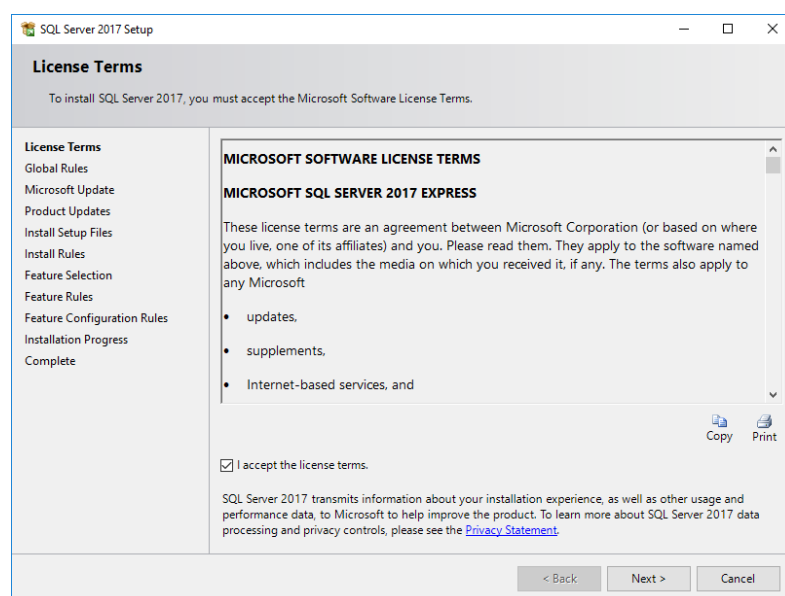
A new interface appears. Please select ‘New SQL Server stand-alone installation or add features to an existing installation’.

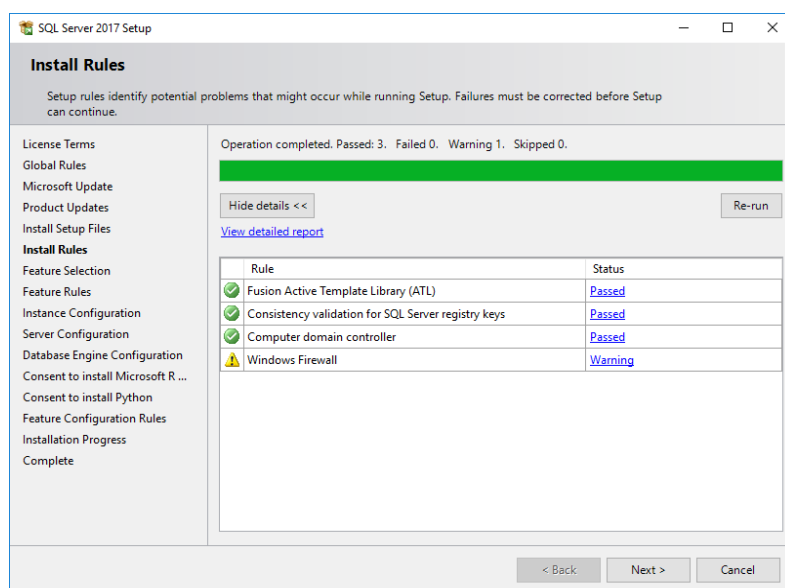
The installation starts automatically after waiting a few seconds.



## STEP 3

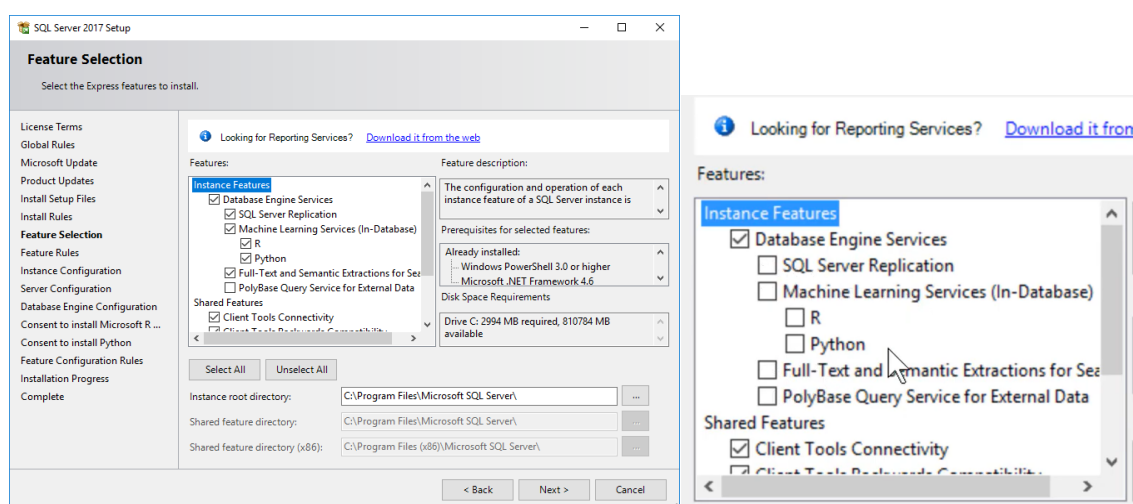
Accept the licence terms and proceed with the installation.  
The images below show you the sequence of steps to be followed.

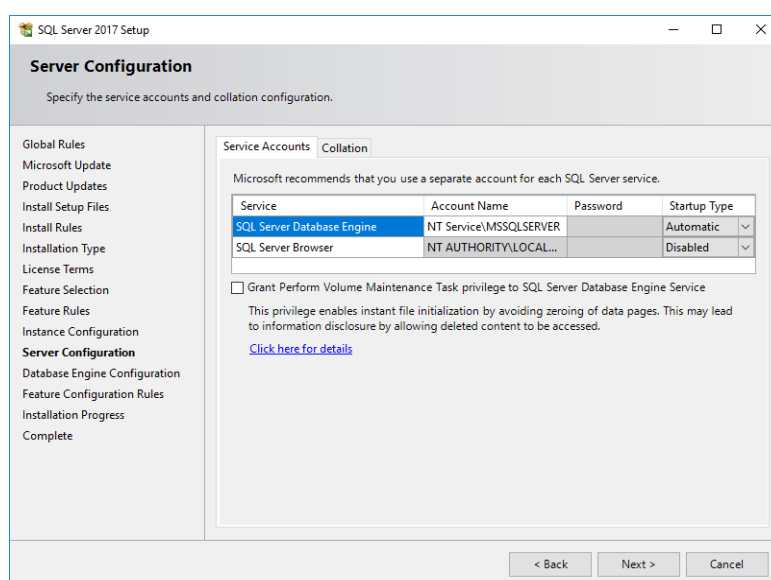
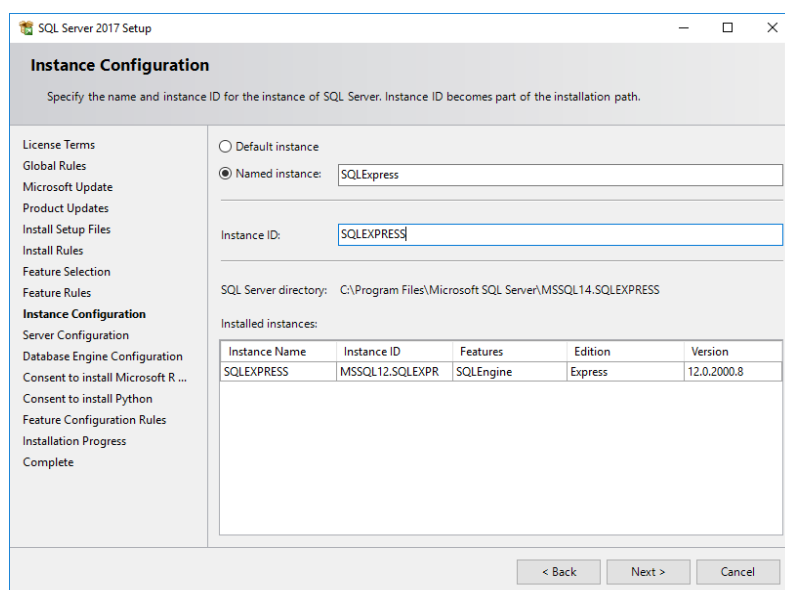




## STEP 4

Please, be aware: by default Microsoft consents the installation of additional tools not necessary for PhoneLog use. Remove the tick on the Microsoft suggested programs: SQL Server Replication; Machine Learning Services (In-Database); R; Python; Full.Text Semantic Extractions.



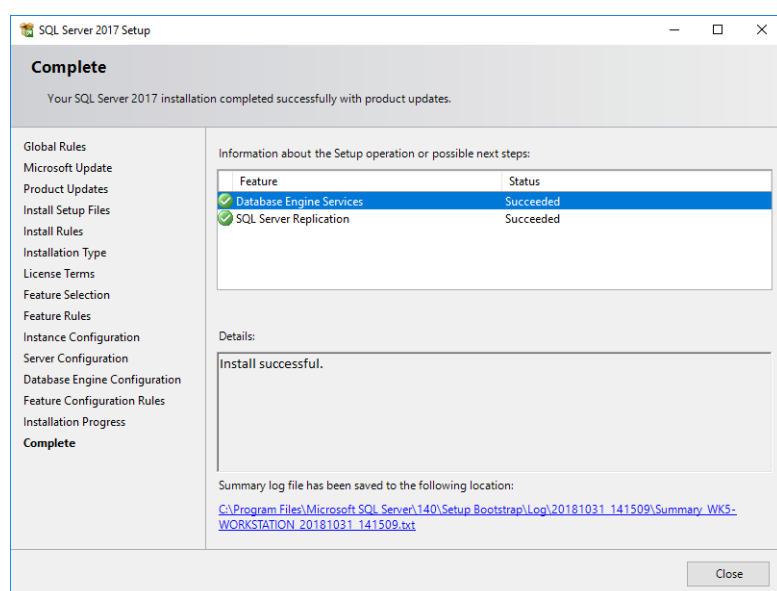
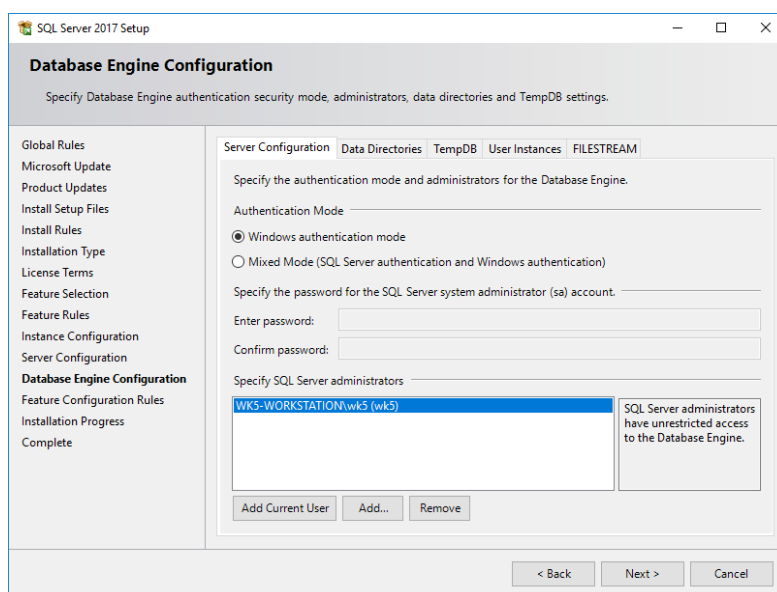


## STEP 5

If not automatically inserted, click on 'Add current User' to grant the user permission on the SQL Server Express database.

**PLEASE NOTE:** if you also want to enable other additional users, manually add them by clicking the button 'Add'.





It is possible to check if SQL Server Express is working properly by following this path: Start → System and Security → Administrative tools → Services → SQL Server  
Check the status, if is not 'Running', right click and 'Start' it.

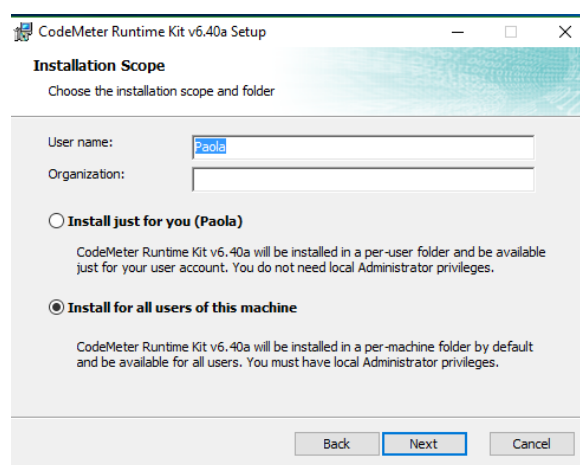
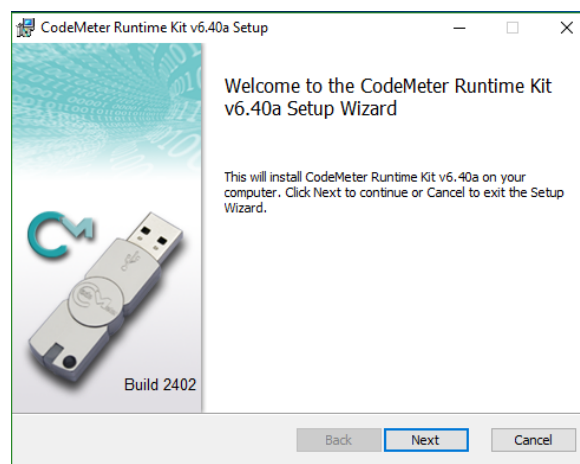
### 3. Download and install Wibu system (for USB Dongle users)

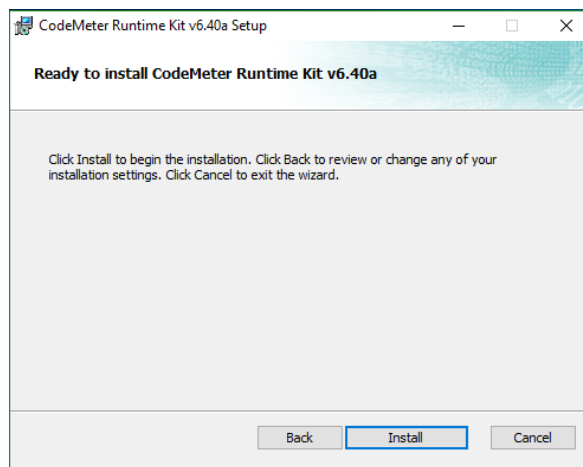
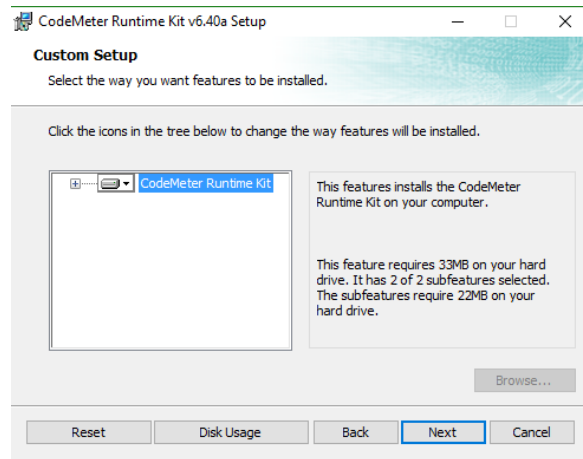
Open the following page:

[<https://www.wibu.com/it/support/user/downloads-user-software.html>]

#### STEP 1

Download CodeMeter for Windows and follow the instructions in order to start the installation.



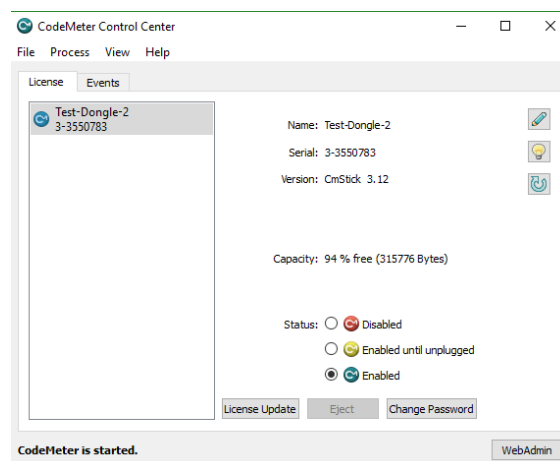


## STEP 2

Open the software from your Desktop



Once the USB dongle has been plugged in, the system displays the interface containing the dongle main information.



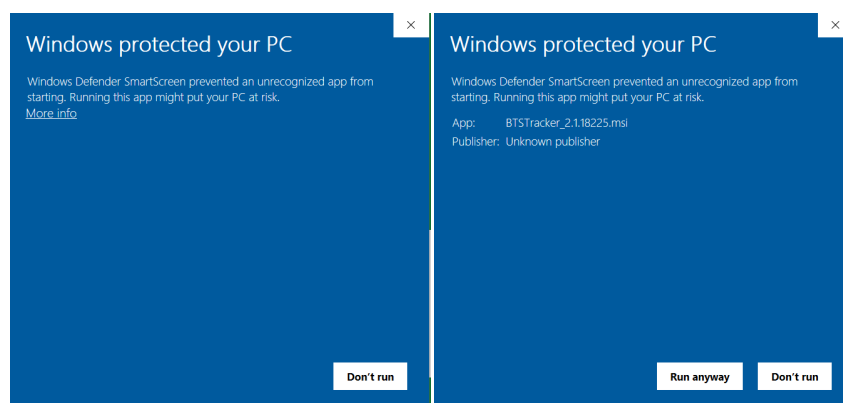
## SecurCube PhoneLog

**Download and install the program found on the web page:**

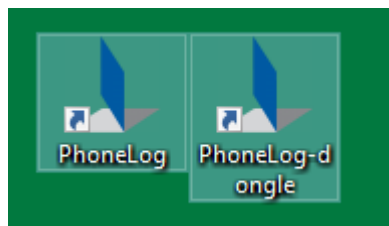
[\[https://x.phonelog.it/Release/stable\]](https://x.phonelog.it/Release/stable)

Follow the procedure to start the installation.

Windows may ask for pre authorization before installing the software; in this case click on 'More info' and then on 'Run anyway'.



Once the installation is completed you see two icons on your machine's Desktop:

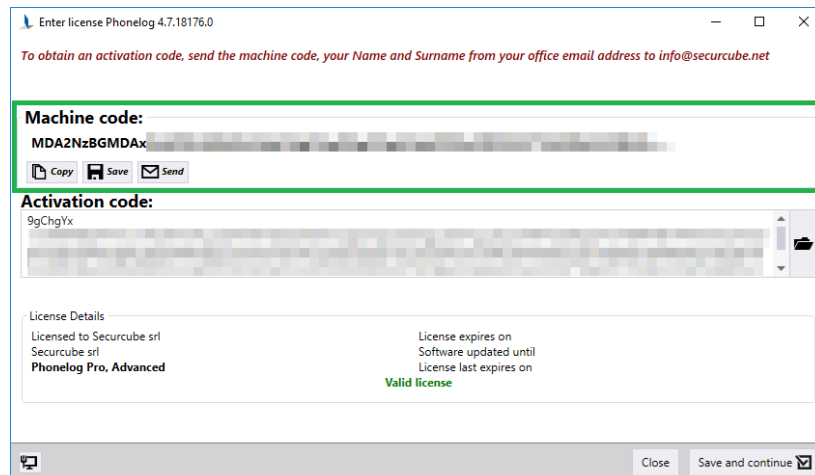


If you are installing the software license directly in your machine, use the program icon called PhoneLog. Follow the section '[Machine license activation](#)' to proceed with the activation of the license.

If you have the USB dongle, use the program icon called PhoneLog-dongle. Follow the section '[USB Dongle activation](#)' to proceed with the activation of the license.

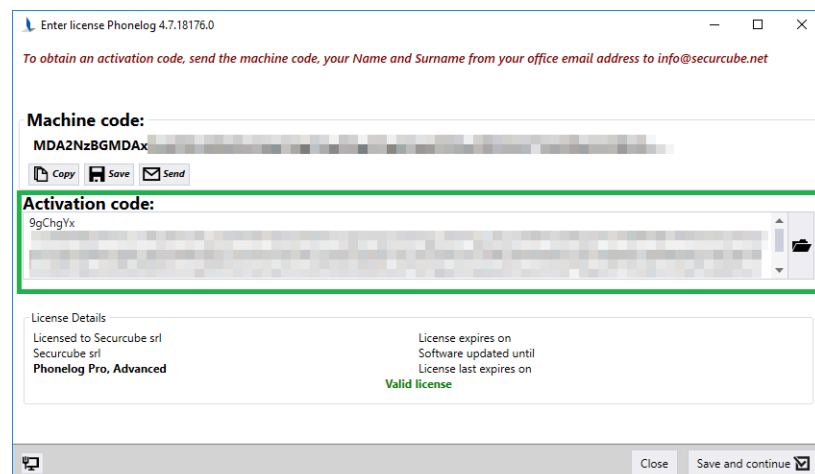
## Machine license activation

To activate the software license, the activation code is required. Please send the machine code (the alphanumeric string). Use the button (Copy; Save; Send) and send it to [sales@securcube.net](mailto:sales@securcube.net).




SecurCube will send the activation code tied to the machine code sent. Copy and paste the license code into the dedicated area.

On the lower right side, you will see the message 'Valid license' together with the expiration date of license and updates. Click on 'Save and continue' to proceed with the installation.



## USB Dongle activation

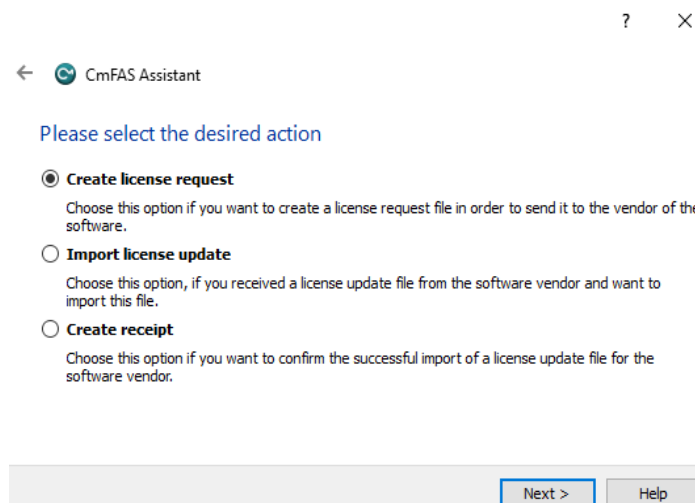
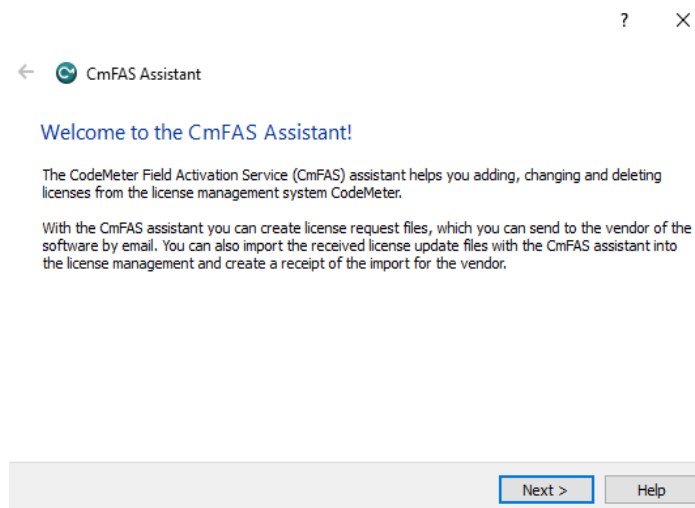
### STEP 1

Open CodeMeter software from your Desktop. From the main interface, make sure to update the Dongle program by clicking the dedicated icon , if this is not the case, the licence will not work properly.

Click on “Licence Update” to generate a **WibuCmRaC** file for the dongle license activation.

Please note, this procedure is valid also to request the **licence renewal** as well.

A procedure automatically guides you in the file creation.



← CmFAS Assistant ? X

Please choose an option for the license request

☒ **Extend existing license**  
Choose this option if you want to change an existing license or to add new licenses to an existing license of the same vendor.

☐ **Add license of a new vendor**  
Choose this option if you want to add a new license and there are no licenses from this vendor in the selected license container.

Next > Help

← CmFAS Assistant ? X

Please choose the vendor

☒ Securcube srl (103009)

Select the software vendor to which you want to send the license request file. The vendor will only see the data which you select here. So you can ensure that the vendor doesn't see which other licenses from other vendors you have.

Next > Help

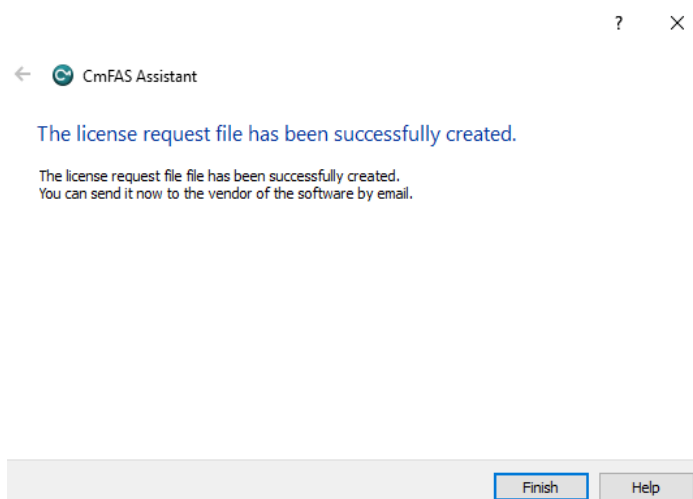
← CmFAS Assistant ? X

Please select the file name

C:\Users\Paola\3-3550783.WibuCmRaC ...

Select a file name for storing the license request file. Then click on 'commit' to create the file. You can then send this file to the vendor by email.

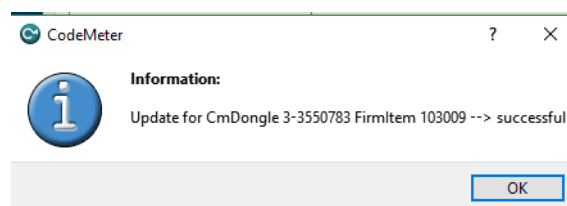
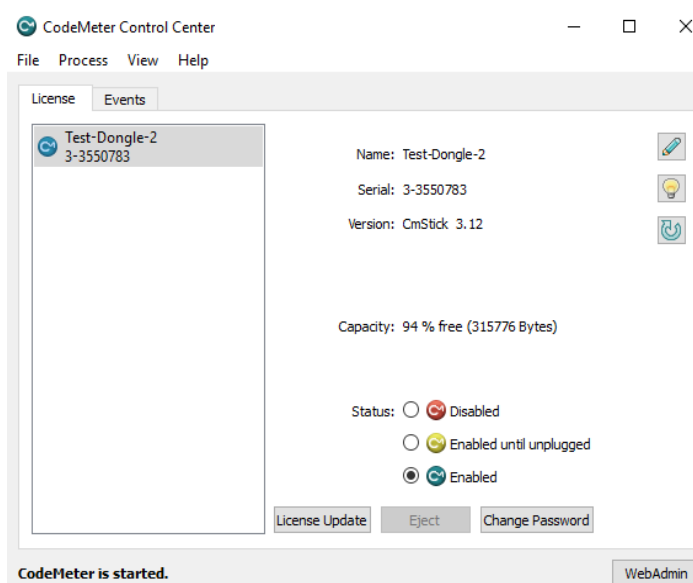
Commit Help



## STEP 2

Please, send the generated file via email in order to receive the activation license, file extension **.WibuCmRaU**.

Drag and drop the file into the interface and a message informs you of the import result.

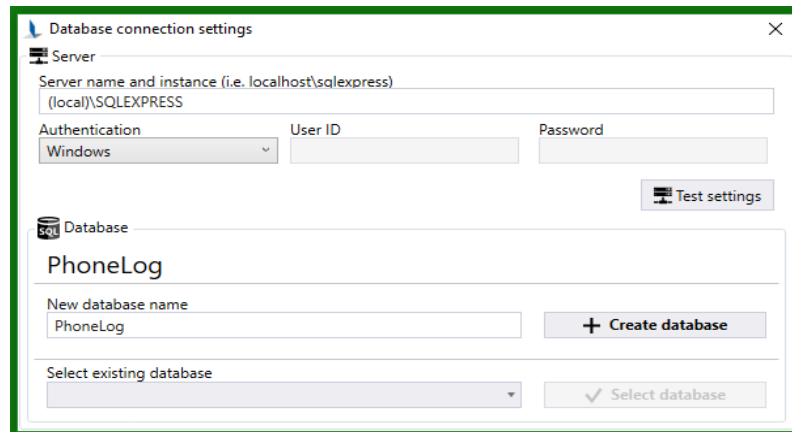




## Start the analysis

Once the software is activated, it is necessary to create the database. Make sure the server name and the instance have the same name as the one previously set during SQL installation. Click on 'Test settings' to receive a feedback from the program and verify everything is ok or if there are some issues.

Create a new database or select an existing one.



If SecurCube PhoneLog cannot connect to the server or cannot find the database, something went wrong with the installation. In this case, please repeat the Installation of Microsoft SQL Server and try again. Feel free to contact us via email at [support@securcube.net](mailto:support@securcube.net), please send us a screenshot of the interface.

If the installation succeeded, you are redirected to PhoneLog main interface. Create a new case or retrieve an old one if you are using an existing database.

For further information we warmly suggest you to consult the User manual available within the software by clicking F1 or from the top menu → Help → User Manual.